

MC Stradale [83283 - 99999999]  
2016 - CHINA  
4700 cc CAMBIOCORSA



Technical Service Department  
Servizio Assistenza Tecnica

WORKSHOP MANUAL

Section	01.00 - 1	
Procedure N.	01.00.004 - 00	Time: 3.40 h
Description	RH ENGINE MOUNTING BRACKET -	
Validity	18/02/2016 - RELEASE 130	
Last Modify	N/D	First Release
Linked Procedures		
01.80.005-0	1.80.005 - RH EXHAUST CATALYTIC CONVERTER-Removal/refitting or replacement	
01.81.004-0	1.81.004 - RH EXHAUST TAILPIPE-Removal/refitting or replacement	
01.81.005-0	1.81.005 - LH EXHAUST TAILPIPE-Removal/refitting or replacement	

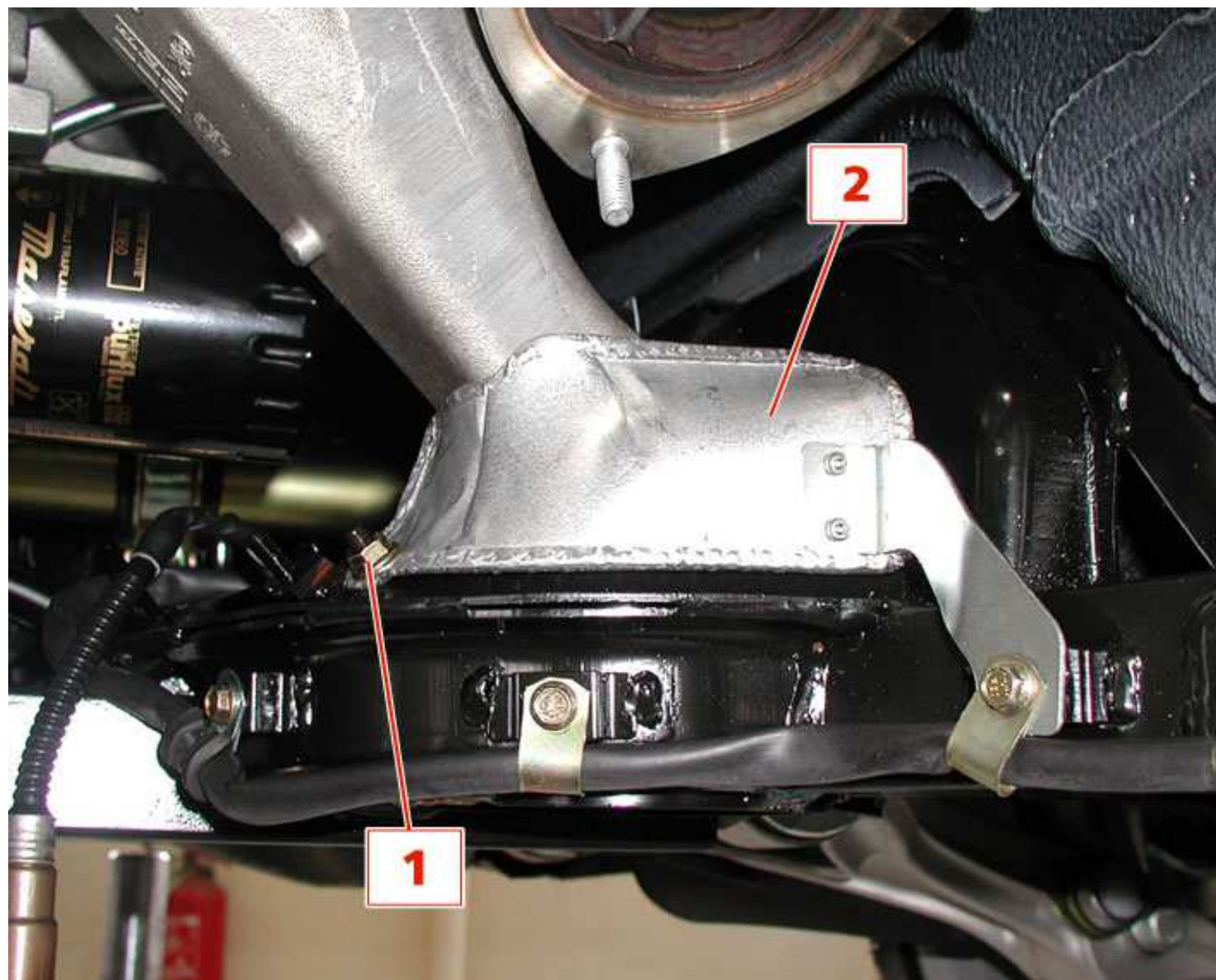
RIGHT-HAND SIDE ENGINE MOUNTING BRACKET

Removal

1. Place the vehicle on the hoist.
2. Remove the two exhaust tailpipes.  
1.81.004 - RH EXHAUST TAILPIPE-Removal/refitting or replacement  
  
1.81.005 - LH EXHAUST TAILPIPE-Removal/refitting or replacement
3. Remove the right-hand side catalytic converter.  
1.80.005 - RH EXHAUST CATALYTIC CONVERTER-Removal/refitting or replacement
4. Undo the retaining screws and remove the lower engine guard.



5. Undo the fastening screw and nut (1) and remove the heat guard (2).



6. Undo the four screws that secure the right-hand side engine mount to the crankcase.





7. Arrange a hydraulic support device underneath the engine, so that you can work in safety.



8. Unscrew the nut that secures the engine mount to the rubber bushing.



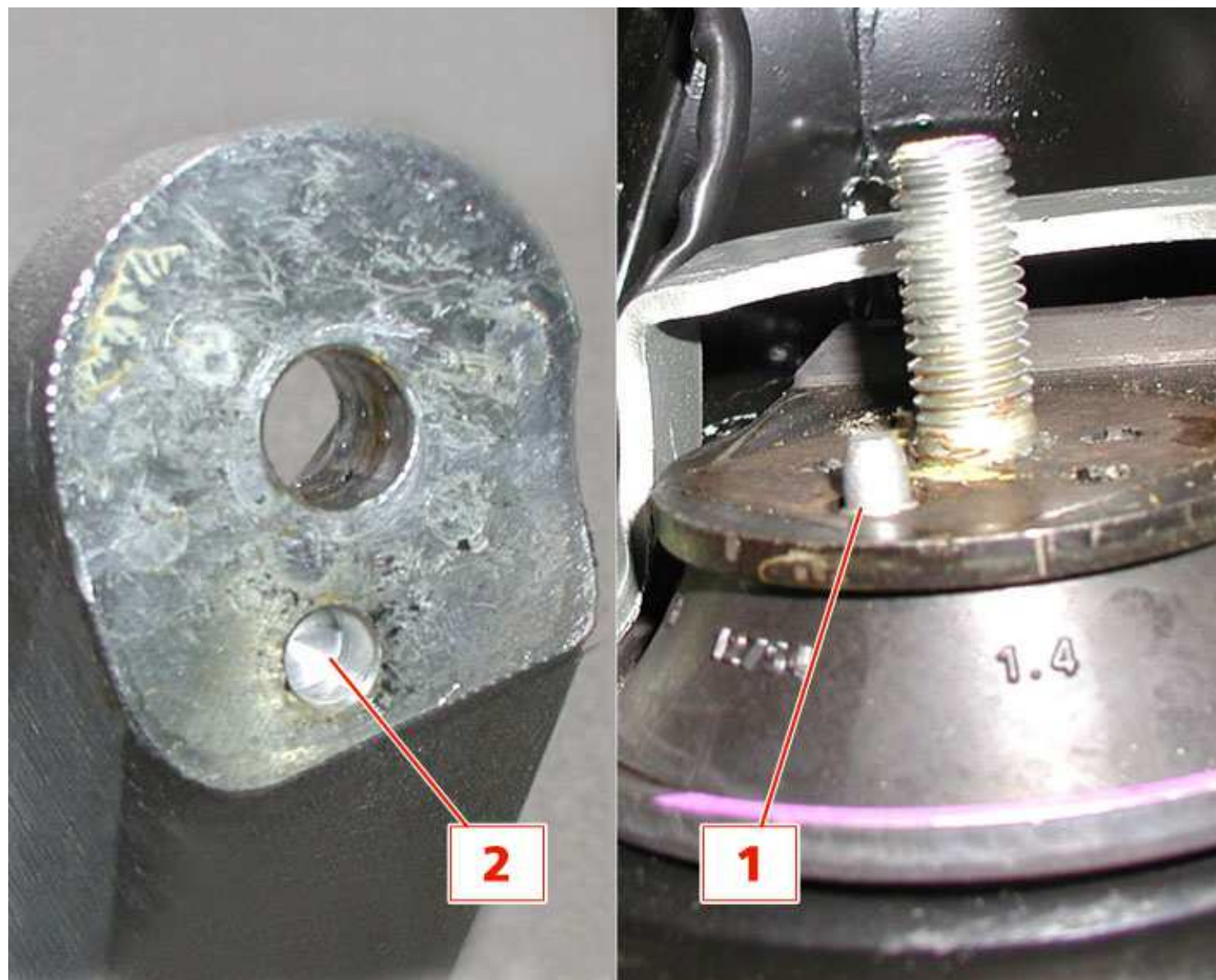
9. Remove the right-hand engine mount from its seat.





## Refitting

10. When refitting the engine mount, be careful with its orientation on the frame
11. Fit the mount in such a way that the pin (1) can be coupled to the hole (2) on the same mount.

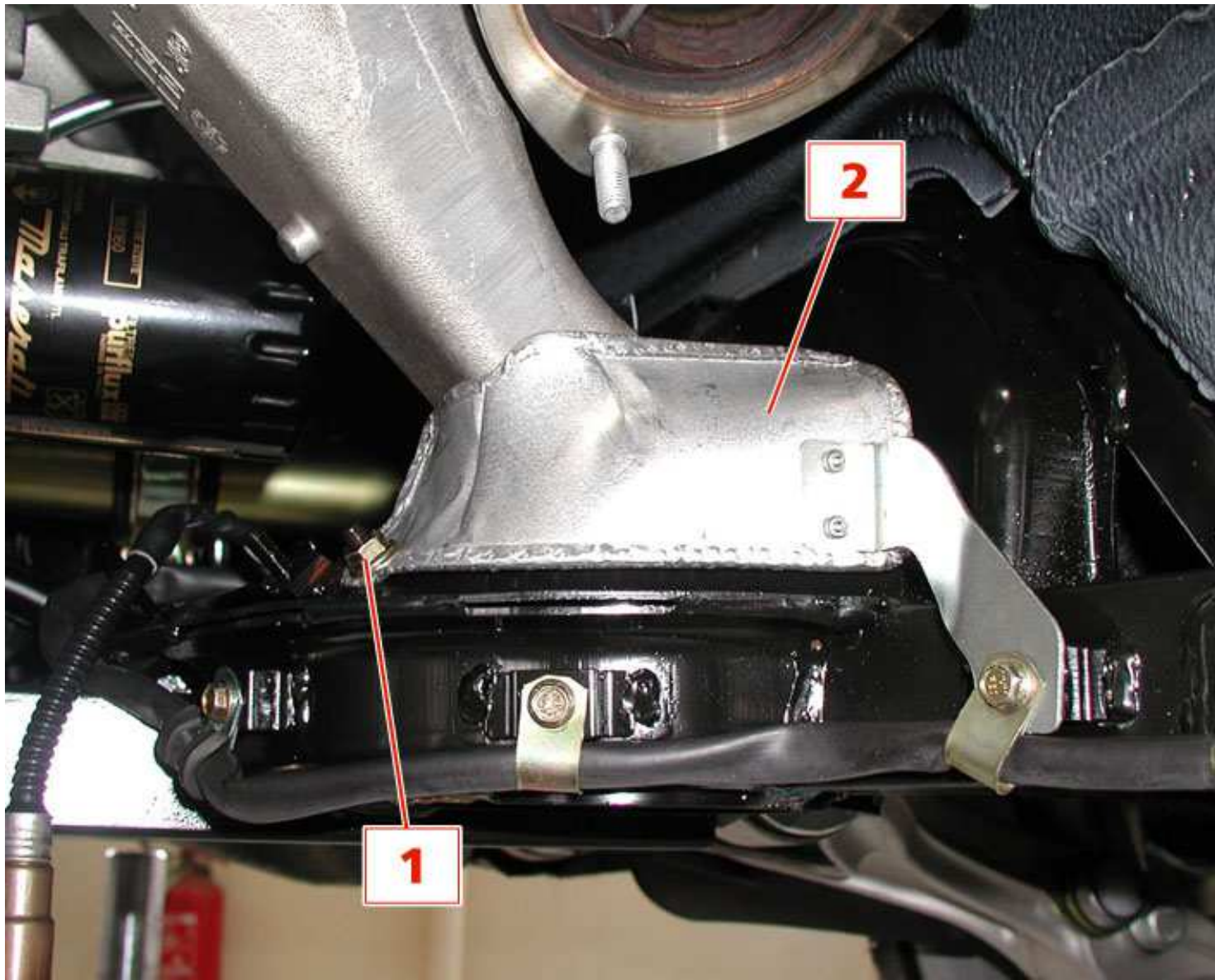


12. Tighten the nut that fastens the engine mount to the rubber bushing to a torque of *120 Nm*.
13. Tighten the screws that fasten the engine mount to the crankcase to a torque of *45 Nm*.





14. Screw down the fastening screw and nut (1) of the heat guard (2).



15. Fit the engine lower guard.





16. Fit the right-hand catalytic converter.

[1.80.005 - RH EXHAUST CATALYTIC CONVERTER-Removal/refitting or replacement](#)

17. Fit the two exhaust tailpipes.

[1.81.004 - RH EXHAUST TAILPIPE-Removal/refitting or replacement](#)

[1.81.005 - LH EXHAUST TAILPIPE-Removal/refitting or replacement](#)

18. Remove the vehicle from the hoist.



MC Stradale [83283 - 99999999]  
2016 - CHINA  
4700 cc CAMBIOCORSO



Technical Service Department  
Servizio Assistenza Tecnica

修理手册

章节	01.00 - 1		
步骤编号:	01.00.006 - 00	时间: 3.60 h	
描述	右侧发动机的固定橡胶衬套 -		
有效性	18/02/2016 - RELEASE 130		
上次修改	N/D	第一次发布	
链接步骤			
01.00.004-0	1.00.004 - 右侧发动机安装支架-拆卸/重装或更换		

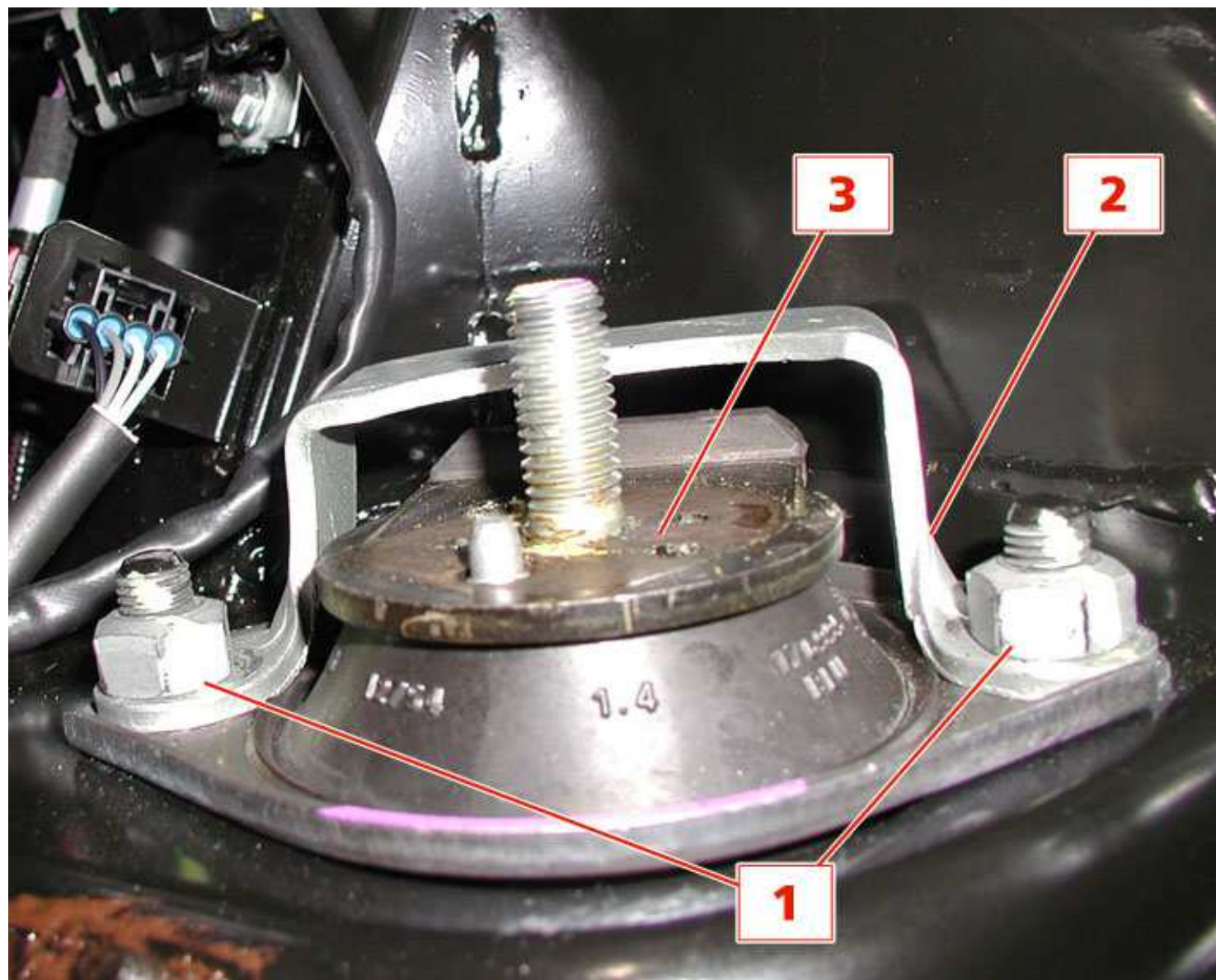
右侧发动机固定橡胶衬套

拆卸

- 1. 将车辆放置在举升机上。
- 2. 拆卸右侧发动机架。

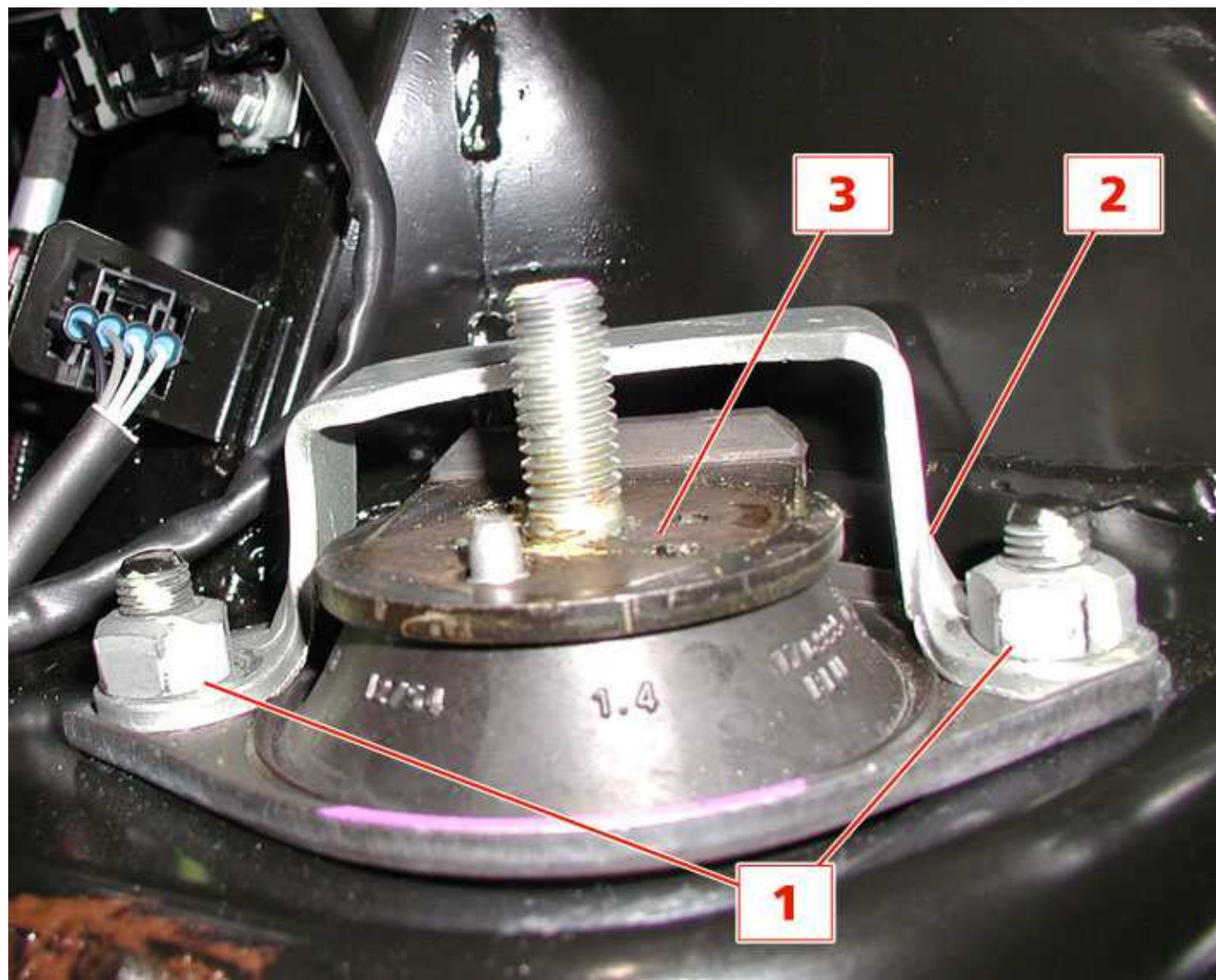
1.00.004 - 右侧发动机安装支架-拆卸/重装或更换

- 3. 拧下螺母(1)，， 拆除架子(2)， 拆除橡胶衬套(3)。



## 重装

4. 安装橡胶衬套(3)、支架(2)，拧紧紧固螺母(1)，并紧固至扭矩为50 Nm。



5. 安装右侧发动机架。

1.00.004 - 右侧发动机安装支架-拆卸/重装或更换

6. 将车辆从举升机上卸下。